

Featured Employee

Fall 2017

INSIDE:

Featured Employee	1
History of Petersen	1
New & Demo Trucks	2
Trucks On Order	2
Used Trucks	3
Used Trucks	4
New & Used Equipment	5
New & Used Equipment	6
Tradeshows	7
SWS Events	7
Job Well Done	8

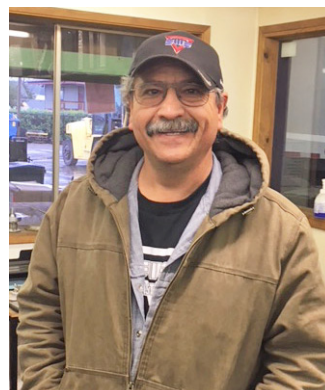
Rafael has been with SWS for over 3 years as a Western Washington Service Technician. Before moving to the Seattle area, Rafael lived in Tuscan, Arizona where he was a Service Technician with a local company for 12 years.

Rafael is from a beautiful little town called Esperanza, Mexico. The Spanish word Esperanza means hope. When Rafael is not working, he enjoys playing drums and cooking meals for his family.



A few things people don't know about Rafael; when he was little he wanted to be an airline pilot, he is a shy person and many times would rather just listen than talk and Rafael is a dedicated family man, who works hard for his family and always puts them first. When asked what he likes most about working on the SWS team, he replied, "all the support I get from everyone and SWS has everything needed to be good at my job and to do a good job for the customer".

Rafael is a huge asset to our SWS Tacoma shop and we are very lucky to have such a skilled compactor and baler technician on our team.



Petersen Industries Grows with SWS

SWS became the Northwest Petersen dealer in 2012, and immediately created an awareness of the innovative Lightning Loader. Petersen Industries, Inc. manufactures equipment for the waste, agricultural, arboricultural, and aggregate markets. Petersen's Lightning Loader grapple truck is used by over 1,000 cities and counties nationwide, and by most major waste companies. In the mid-1970's Petersen designed a knuckleboom that could be used for loading bulky trash. The result was a trash loader concept that has been improved and refined over the years. With the exception of just a few purchased items, Petersen manufactures all major components, including most hydraulic cylinders. With complete CNC machining capabilities and fabrication facilities, Petersen is able to control every aspect of schedule and quality control.



This past year Petersen introduced two new models of the knuckleboom, the Route Assistant and the Atlas Lightning Loader. The Route Assistant option incorporated a side-loading trough to the front of the dump body and can be a full-trough system or half-trough and cart tipper. The Atlas Lightning loader has the longest reach with a 25 foot boom that rotates 360 degree continuous and is capable of lifting over 9,000 pounds. Petersen's vision of consistently manufacturing top of the line products and offering excellent customer service runs parallel with what SWS offers its customers. Our success and value as a company is driven by customer satisfaction and we wouldn't have that without vendors like Petersen Industries.



New & Demo Trucks



2017 Peterbilt w/ Schwarze A7 Tornado



Demo is fully equipped with 8.4 yard capacity, Hydraulic Drop Down Screens, Brake drum dust covers, Water fill, 3 camera systems, 140hp John Deere Tier IVF, Dual GEO Gutter Broom, Additional 350 gallon water tank and more. #160171

2017 Ford 450 w/ IBAK Camera System



Demo is equipped with a IBAK Pipeline Inspection Camera System that has everything needed to inspect any type of sewer pipelines. #170109

2017 Freightliner M2 106 w/ New Way Cobra



Demo 20 Yard Rear loader equipped with Cummins ISL 270Hp, Allison 3500RDS-P, Lightweight body, externally mounted cylinders for easy maintenance, Auto-lock tailgate, LED lights, Variety of container handling options and more. #160126

2017 Peterbilt w/ Stellar ECCR



Demo Stellar ECCR equipped with a 8,000 lbs. lifting, dumping and transporting capacity, front and rear load containers, inside and outside controls, extendable and retractable fork body with rotatory and more. #160206

2017 Peterbilt w/ TL-3 Lightning Loader



Demo unit is equipped with Cummins ISB 280HP, Allison 3500 RDS, 12K Front Axle, 21K Rear Axle, Dual manual controls for outriggers and loader on both sides of truck, 20 foot Main boom & tip boom reach, Dump body hoist capacity 24 cubic yards and more. #160208

2017 Ford Transit Connect w/ IBAK SI Camera System



Demo is equipped with a IBAK Panorama SI Manhole Inspection Camera System has everything needed to inspect any type of manhole, around 40 manholes daily and more. #170133

2016 Peterbilt w/ New Way Mammoth



Demo 40 Yard Front loader equipped with 16,300 lbs. body weight, 21 sec. complete pack cycle time, 12 sec. complete arm cycle time, Hardox steel in body floor & side, hopper floor & sides and tailgate and more. #160113

2016 Peterbilt 320 w/ Wayne Curbtender G4



Demo 27 Yard Side Loader equipped with Cummins engine, Allison Transmission, Safety Vision camera system, 2,000 lb. lift capacity, spare gripper holder and more. #150010

2016 Mack w/ Labrie Automizer



Demo 31 Yard Side Loader equipped with a Heavy duty arm & grabber for 32 to 95 gallon containers, Clean out tools, LED multi-function strobe lights, Extension for 300 gallon containers, 3rd Eye camera systems and more. #140122

2016 Freightliner 114SD w/ Vac-Con Combination



Demo Vac-Con Combination truck is equipped with Hydraulically operated front mount hose reel, Operating controls in front, Polyethylene water tanks, High capacity water pump, Debris body dump control on side of truck and more. #160074

2015 Peterbilt 320 w/ Dadee Scorpion ASL



Demo 27 Yard Side Loader equipped with Cummins ISX12, Allison 4500 RDS-P, 1,600 lb lifting capacity, Arm reach of 8 feet, Eaton electrical components, LED work lights and strobe lights, Tip to dump body and more. #140145



New & Demo Trucks On Order

2018 Pete 567 w/ AA24-200 Endless Chain Hoist - SWS170080

2018 Pete 567 w/ AA24-200 Endless Chain Hoist - SWS170081

2018 Pete 567 w/ AA24-200 Endless Chain Hoist - SWS170082

2018 Pete 567 w/ AA24-200 Endless Chain Hoist - SWS170083

2018 Pete 567 w/ AA24-200 Endless Chain Hoist - SWS170108

2018 Pete 520 w/ Wittke Starlight 40yd Front loader - SWS170084

2018 Pete 520 w/ New Way Mammoth 40 Yard Front Loader - SWS170086

2018 Pete 520 w/ Dadee Scorpion 27 Yard Side Loader - SWS170087

2018 Pete 520 w/ Labrie Automizer 29 Yard Side Loader - SWS170088



Used Trucks



2013 Freightliner w/ Vac-Con Combination



Used 2012 Vac-Con equipped with Aluminum telescoping boom with pendant control station, hose reel front mounted articulated, water system 80 gpm/2000 psi pump, GIANT Hydrostatic driven blower and more. #160058

2012 Freightliner w/ Vac-Con Combination



Used 2012 Vac-Con equipped with Hydrostatic driven blower, Giant water pump, LED lighting, 12 cubic yard debris tank capacity, 1300 gallon water tank capacity and more. #160057

2012 International w/ Heil Rapid Rail



Used 20 Yard Automated Side loader equipped a 7400 SBA engine, 11,076 hour and 120,866 miles and more. #170011

2010 Mack w/ Heil 7000 ASL



Used 33 Yard Automated Side loader equipped with Universal grabbers, Dual steering, Heated/motor mirrors and more. #160050

2010 Peterbilt w/ Labrie Automizer



Used 31 Yard Automated Side loader is equipped with a 4500 RDS transmission, 64,740 GVWR, 6,663 hours and more. #170021

2009 International w/ Loadmaster



Used 16 Yard Rear loader equipped with a Max Force 466 engine, Allison Auto 6 speed transmission, hours 13,348 and more. #170006

2008 Mack LEV w/ Heil



Used 33 Yard Automated Side loader equipped with a Mack MP7L 325HP engine, Universal grabbers, Dual steering, Heated/motor mirrors and more. #150099

2008 Mack w/ Heil 7000 ASL



Used 33 Yard Automated Side loader equipped with a Mack MP7 325HP engine, Universal grabbers, Dual steering, Heated/motor mirrors, and more. #160049

2006 GMC w/ Heil



Used 22 Yard Side loader in good condition. Equipped with a Duramax engine, Allison transmission, 37,600 GVWR and more. #150121

2006 International w/ 25 Yard Rear Loader



Used 25 Yard Rear loader equipped with a Cummins ISB engine, Eaton manual transmission, 52k GVWR, 16k hours and more. #150106

2005 Autocar WX64 w/ Heil 7000 ASL



Used 33 Yard automated Side loader with full eject equipped with a Cummins ISL 330HP engine, Allison transmission, Universal grabbers, Dual steering and more. #150098

2004 CCC w/ Leach 2RII



Used 25 Yard Rear loader equipped with a CAT-10 engine, Allison 4000RDS transmission, 117k mileage, 33k GVWR and more. #170116

2004 Peterbilt w/ 2010 Heil 7000 Durapack



Used 28 Yard automated Side loader with full eject equipped with a CAT C10 engine, Allison transmission, 62,740 GVWR and more. #170034

2004 Sterling w/ Vac-Con Combination



Used 2004 Vac-Con Combination Sewer truck equipped with a CAT C7 275 HP Diesel engine, Allison transmission, 11 cubic yard debris body, Front mount hose reel, Cyclone separator, Lazy susan pipe rack and more. #160003

2004 Pete 320 w/ Heil



Used 28 Yard Side loader equipped with CAT C10 335HP engine, Allison HD4560P transmission, 62,740 GVWR and more. #160098

2004 Peterbilt w/ 2011 Heil 7000 Durapack



Used 28 Yard Side loader equipped with a CAT C10 engine, Allison transmission, 62,740 GVWR, 12,471 hours and more. #170035

2004 CCC w/ Leach 2RII



Used 25 Yard Rear loader equipped with a CAT-10 engine, Allison 4000RDS transmission, 98k mileage, 33k GVWR and more. #170117

2004 CCC w/ Leach 2RII



Used 25 Yard Rear loader equipped with a CAT-10 engine, Allison 4000RDS transmission, 94k mileage, 14k hours and more. #170136

2004 CCC w/ Leach 2RII



Used 25 Yard Rear loader equipped with a CAT-10 engine, Allison 4000RDS transmission, 95k mileage, 15k hours and more. #170137

2004 CCC w/ Leach 2RII



Used 25 Yard Rear loader equipped with a CAT-10 engine, Allison 4000RDS transmission, 117k mileage, 19k hours and more. #170138

Used Trucks



2003 Volvo w/ Heil



Used 24 Yard Side loader equipped with a Volvo VED7 engine, 5 speed transmission, 42,020 GVWR and more. #150120

2003 Autocar w/ Heil ASL



Used 28 Yard Side loader equipped with a Cummins ISM 320 HP engine, Allison 6 speed transmission, 18k front axle, 40k rear axle, Python arm and more. #140087

2002 Volvo w/ Heil ASL



Used 28 Yard Automated Side loader equipped with a Cummins ISM engine, Allison 4060 5 speed transmission, 60k GVWR, Rapid Rail arm, 160k miles and more. #140142

2003 Autocar w/ Heil Half-Pack



Used 40 Yard Front loader equipped with a ISM V engine, HD 4560P transmission 66k GVWR, Left-hand drive and more. #170033

2002 CCC w/ Leach 2Rll



Used 25 Yard Rear loader equipped with a CAT engine, Automatic transmission, 65k GVWR, 18k hours and more. #170098

2002 CCC w/ Leach 2Rll



Used 25 Yard Rear loader equipped with a a CAT engine, Automatic transmission, 65k GVWR, 19k hours and more. #170099

2002 CCC w/ Leach 2Rll



Used 25 Yard Rear loader equipped with a a CAT engine, Automatic transmission, 65k GVWR, 16k hours and more. #170100

2001 Freightliner w/ McNeilus



Used 25 Yard Rear loader equipped with a Cummins ISL engine, Automatic transmission, 75,020 GVWR and more. #160065

2001 Volvo w/ Wayne Curbtender



Used 20 Yard Side loader equipped with a Allison transmission, 44,740 GVWR, 107k miles, 3k hours and more. #160004

2000 CCC w/ McNeilus



Used 25 Yard Rear loader equipped with a a CAT engine, Automatic transmission, 65k GVWR, 21k hours and more. #170097

1996 CCC w/ 2005 Labrie Minimax



Used 12 Yard Side loader equipped with a 3116 CAT engine, Allison transmission, Dual Perkins car tippers and more. #140066

1988 Volvo w/ Leach 2Rll



Used 25 Yard Rear loader equipped with a Detroit engine, Allison transmission, Drum winch, Container dump bar, Full eject and more. #6578

1988 Peterbilt 320 w/ Heil Formula 7000



Used 20 Yard Automated Side loader equipped with a Cummins L10 engine, Allison MT654 transmission, 41,200 GVWR and more. #160130



**Contact SWS Today for
More Information on
Your New Truck!
1-800-892-7831**



New & Used Equipment



New Balers

Marathon V6030HD w/ Options - 9 Available
Marathon V6030HD - 1 Available

New Compactor

Marathon RJ250 Self-Contained 30 Yard #170103
Marathon RJ250 Self-Contained 30 Yard #170104

Used Compactor - Stationary

Used Cram-A-lot 2 Yard #140054
Used Cram-A-Lot 2 Yard #140067
Used 2 Yard #140073
Used Marathon TC220 #140126
Used Marathon TC225 #150005
Used Galbreath Stationary #150011
Used Marathon TC225 #150048
Used Quality Products #150006
Used Marathon TC2HD #140088
Used Marathon TC2 HD #150155
Used Galbreath PF6055 2.5 Yard #150160
Used Marathon TC-2HD #160020
Used Galbreath PF 6040 Packer Head #160054
Used Marathon TC3HD #150025
Used Marathon VIP6 #150080
Used Marathon VIP6 #150081
Used Marathon VIP3 #160005
Used Marathon RJ1835 #160082
Used Marathon TC3 #160084
Used Marathon VIP6 #160088
Used Marathon TC225 #160119
Used Cramalot Apt Compactor #160127
Used Marathon RJ225 #140129
Used Marathon RJ225HD #160163
Used Global JM160 #160176
Used Marathon TC220HDHF #170013
Used KP2SH #170031
Used Marathon RJ225 #170105
Used Marathon RJ225 2 Yard #170064
Used Marathon TC2HD #170054
Used Marathon TC2HD #170056
Used Marathon TC2HD #170051
Used Global JM40 #170053
Used Marathon TC2HD #170055
Used Marathon TC2HD #170057
Used Marathon TC2HD #170058
Used Marathon TC2HD #170059
Used Marathon TC2 #170075
Used Marathon TC2.5HD #170093
Used RJ-1835-5A MiniMac #170121
Used PTR2000SP #170151



Used Compactor - Self Contained

Used Global E32 20 Yard HT #140006
Used Marathon RJ88SC 24 Yard #140010
Used Kilkom LP48 HT #140027
Used Summit SC2244 10 Yard #140030
Used Marathon MPT 6 Yard #140139
Used Marathon MPT4 FL #150051
Used Marathon JP-16ROSC #150059
Used Kilkom A2/2008 20 Yard #140106
Used Marathon MPT 4 Yard FL #140128
Used Marathon MPT 4 Yard FL #150117
Used Marathon MPT 4 Yard FL #150130
Used Marathon MPT 4 Yard FL #150138
Used Marathon MPT 5 Yard FL #160018
Used Summit SC4060 25 Yard #160081
Used Marathon MPT 4 Yard #160095
Used Summit25 Yard #160100
Used Marathon RJ250 30 Yard #160114
Used Marathon RJ100SC #160180
Used Kilkom LP60 w/ 2 Yd Dumper #160205
Used Kilkom LP60 20 Yard #170003
Used Global E40 10 Yard #170101
Used KPAC KP1HT 25 Yard #170029
Used Marathon RJ250WD 30 Yard #170096
Used Kilkom 30 Yard #160134
Used Marathon RJ88HT #170092
Used Galbreath OSC2 30 Yard #170112
Used Marathon RJ88SC #170120
Used WasteQuip #170125
Used Global #170126
Used Marathon RJ250 Ultra 30 Yard #170131
Used Summit SC 4060/2598 #170139
Used Marathon RJ88SC24 #170144
Used PTR PT200 #170150
Used Marathon MPT4FL Pak'tainer #170153
Used RJ88HT 20 Yard #170134

Used Balers

Used Piqua Vertical Baler #140049
Used Piqua Vertical Baler #150053
Used WasteQuip Baler #150068
Used Kilkom 220 48" Baler #6810
Used WasteQuip Baler #150070
Used Marathon SE Baler #160021
Used GPI Harmony Baler #160137
Used Cramalot 72-DH-LU Baler #160174
Used Global 160HD Baler #160191
Used Kilkom K1-5 Baler #170077
Used Kilkom K1-5 Baler #170048
Used Marathon V6030 Baler #170113
Used Piqua Baler #170147
Used Kilkom K3-5 Baler #170149

New & Used Equipment



Used Containers

Used 30 Yard Octagonal Container #140011
 Used 30 Yard Octagonal Container #140012
 Used 25 Yard Octagonal Container #140053
 Used 30 Yard Octagonal Container #140110
 Used 30 Yard Octagonal Container #150019
 Used Marathon 30 Yard Octagonal Container #160026
 Used 30 Yard Octagonal Container #160030
 Used 40 Yard Octagonal Container #160040
 Used Galbreath 33 Octagonal Container #160055
 Used 30 Yard Octagonal Container #160067
 Used 2 Yard Capital MiniMac Container #160083
 Used 2 Yard Tow Carts #160132
 Used REM 40 Yard Container #160145
 Used 30 Yard Octagonal Container #160164
 Used 5 Yard Compaction Container #170091
 Used 30 Yard Container #170032
 Used 30 Yard Container #170065
 Used Marathon 40 Yard Octagonal Container #170037
 Used Marathon 40 Yard Octagonal Container #170038
 Used Marathon 40 Yard Octagonal Container #170039
 Used Marathon 40 Yard Octagonal Container #170040
 Used Marathon 40 Yard Octagonal Container #170042
 Used 40 Yard Octagonal Container #170045
 Used 40 Yard Octagonal Container #170046
 Used Marathon 40 Yard Octagonal Container #170076
 Used Marathon 40 Yard Octagonal Container #170110
 Used Marathon 40 Yard Octagonal Container #170094
 Used SaniTech 40 Yard #170128



Miscellaneous Used

Used Bale Cart for stockroom baler #MBVCART
 Used Sonozaire 115A #5657
 Used Marathon Ground-level Cart Dumper #6502
 Used Marathon Integral Cart Dumper #6652
 Used Complete Cascon Hoist (Hoist Only) #6748
 Used Marathon Power Unit 3 Phase, 3 HP, 208 VAC #6751
 Used 2 Yard Stationary Ground Mount Cart Tipper #140040
 Used 2 Yard Stationary Ground Mount Cart Tipper #140039
 Used Capital Tow Carts (Qty 13) #140137
 Used Perkins Universal Tap in Kit #150045
 Used Galbreath Dumper #140091
 Used Cart Dumper (Custom Fabrication) #150063
 Used REM TRC 18 48" Wide Above Ground Conveyor #150061
 Used Mega Special Cart Dumper 68/95 Gallon #150109
 Used Perkins Universal Tap in Kit #140117
 Used Power Unit (Off Marathon RJ250SC) #160041
 Used 2 Yard Packer Head #160039
 Used Marathon Tipper #160056
 Used Bridgestone 11R-22.5 RETREAD Tires (Qty 7) #160059
 Used Galbreath 10HP Power Unit #160017
 Used Marathon Power Unit #160076
 Used Marathon Power Unit #160085
 Used Galbreath Power Unit #160152
 Used Marathon Power Unit w/ Dumper Controls #160153
 Used Marathon Power Unit #160154
 Used Marathon Power Unit w/ Dumper #160155
 Used Nedland Power Unit #160156
 Used Galbreath Power Unit #160157
 Used Marathon 10 HP Power Unit #160099
 Used Marathon RJ88 Power Unit #160162
 Used Marathon 10 HP Power Unit #160168
 Used Marathon 5HP Power Unit #160170
 Used Marathon 5HP Power Unit #160173
 Used 5HP Power Unit #170018
 Used 5HP Power Unit #170027
 Used Marathon Power Unit from RJ88 #150058
 Used Galbreath Power Unit #150115
 Used Galbreath Power Unit #150116
 Used Marathon Power Unit from MPT4 #160006
 Used Marathon Power Unit from RJ250 #160046
 Used Marathon 10HP Power Unit #160109
 Used Galbreath Power Unit #160140
 Used Galbreath Power Unit #160141
 Used Power Unit #160177
 Used Power Unit #170026
 Used Power Unit #160080
 Used Marathon Power Unit #170111
 Used Power Unit 10HP #170123



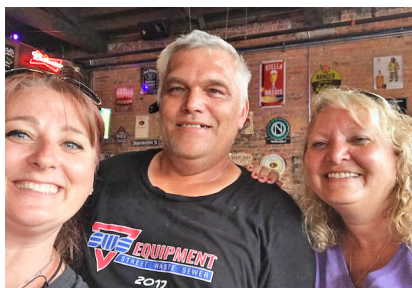


Upcoming Tradeshows

APWA Oregon Street Maintenance & Collection - Newport, WA - Oct 25, 2017
Trends 2017 Conference - Seattle, WA - Dec 5, 2017



What's Happening at SWS?





Standard
U.S. Postage
PAID
Spokane, WA
Permit #4

Spokane: 1-509-533-9000
Tacoma: 1-206-282-2100
Toll Free: 1-800-892-7831
www.SWSEquipment.com

Fall 2017



Take a look at our newly designed website:
www.SWSEquipment.com

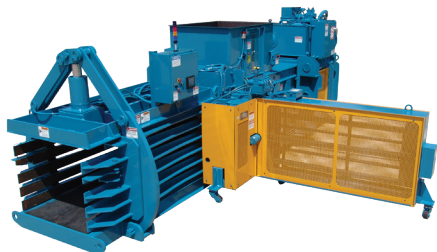
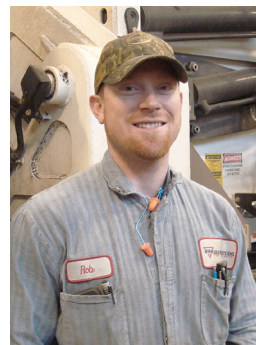
Job Well Done!

A Week in the Life of our Service Technicians

It was a great week for a tristate excursion. Monday September 11th, Rob, left SWS Spokane, driving to the Boise, Idaho area. Along the way, Rob performed some warranty work on a couple sweepers and on Tuesday, installed a RJ250 compactor. Wednesday, on his way to Twin Falls, he performed a few Preventative Maintenance Contract service calls (PM's). Thursday morning, Rob installed a TC300 compactor with a SWS fabricated through-the-wall chute. With a two-plus hour delay on day one, Rob was still able to complete the project early Friday afternoon and drive to Pocatello, Idaho. Once in Pocatello he performed a couple more PM's Saturday, along with prepping a baler for removal from one building and re-installing it at another location. While en route back to Boise, he performed some additional PM's and prepared for the removal of a horizontal baler.

On Monday, Jarod another technician flew into Boise, Idaho to meet up with Rob. Both worked together preparing an EX 60 horizontal baler for removal from a building along with the conveyor that was feeding the baler. Tuesday morning, they met a rigging crew, crane and a semi-truck to remove the baler from the building and load it on the semi-truck for transportation. Once loaded they drove to Pocatello, Idaho and proceeded to pick up the baler that Rob prepared for removal on Saturday, and loaded it onto the semi-truck. Once the truck was loaded, they drove to Salt Lake City, met the semi-truck at the 3rd baler location, and loaded the third baler on the semi-truck. Wednesday morning, Rob and Jarod met another rigging crew and crane at the final location and proceeded to unload and install all three balers and the one conveyor. By day's end, all the equipment was in place and Thursday was spent bolting up the conveyor to the horizontal baler, anchoring all the equipment in place and performing PM's. When they were finished, Rob flew home from Salt Lake City, and Jarod started the long drive back to SWS Spokane. While en route, Jarod performed another service call outside of Boise and still arrived in Spokane before the end of day, Friday.

Thank you to the SWS Equipment team, from sales to project management and especially to our technicians, Rob and Jarod. The efforts by everyone, from the initial planning to the final install and repair, goes to show how dedicated our employees are. Also, thank you to the technicians who were back at the shop for picking up the slack while Rob and Jarod were out of town during an extremely busy time. The feedback from every one of our customers involved has been nothing but positive.



WWW.SWSEquipment.COM

TOLL FREE 1-800-892-7831