

SWE EQUIPMENT

STREET WASTE SEWER

Summer 2017

INSIDE:

- Featured Employee 1
- History of Cascade 1
- New & Demo Trucks 2
- Trucks On Order 2
- Used Trucks 3
- Used Trucks 4
- SWS Name Change 4
- New & Used Equipment 5
- New & Used Equipment 6
- Tradeshows 7
- SWS Events 7
- Tips to Purchase Used 8

Featured Employee

Brandy Wood has been with SWS for almost two years. She is responsible for processing all payments, invoicing, collections and handling customers' questions. Brandy is one of the first faces you see when visiting our office in Spokane.

Raised in Sonoma, California, Brandy moved to Spokane, WA in September of 2015 with 3 of her 4 kids. One word that best describes Brandy is outgoing. When she is not at work, she is exploring the beautiful lakes and rivers in this area. A few things that people don't know about Brandy is; she leads worship at church, she hates the feeling of actual cotton and she is a total daddy's girl. The office wouldn't be the same without Brandy. Her positive and bubbly personality is a pleasure! When asked what she likes most about working at SWS, she responded "I have the privilege of coming to work every day and working with the most incredible people who care about each other and about what they do. We all make such a great team. We are always putting our customers and their needs first, which is a common goal that we all share. This makes it so easy to work for this great company." Brandy is an ambitious and incredibly hard-working person who is a joy to work with. She is a true team player who always has a positive demeanor and she brings out the best in her coworkers. She is an all-around great person and SWS is grateful to have found such a dedicated and driven person.



Cascade Cart Solutions

Cascade Cart Solutions, a Cascade Engineering company based in Grand Rapids, Michigan, is a leader in providing solutions to for the municipal solid waste, recycling, and organics industry. They take pride in designing products and solutions with the customer in mind. They manufacture containers as well as offering information management technology. Their services deliver streamlined operations, increased profits, positive environmental impact, engaged residents and a path to zero waste.

Since the beginning in 1989, they have placed over 27 million carts in the market. Their Grand Rapids facility was built to handle the manufacturing and testing of large containers, with one of the largest presses in North America – a 9,000-ton injection molding machine. Cascade's world-class manufacturing facility produces the highest quality and most cost effective products. The in-house resources ensures that when you purchase a container from Cascade Cart Solutions, you are getting the most durable product available on the market today.

In the twenty-five plus years they've been producing carts, SWS has been a distributor of Cascade for almost seventeen years. In that time, SWS has provided customers with over 400,000 carts. Cascade's determination to create the highest quality and most cost effective products coincides with SWS's commitment to provide the best possible products and services. Together, that's a winning combination.



New & Demo Trucks



2017 Peterbilt w/ Schwarze A7 Tornado



Demo is fully equipped with 8.4 yard capacity, Hydraulic Drop Down Screens, Brake drum dust covers, Water fill, 3 camera systems, 140hp John Deere Tier IVF, Dual GEO Gutter Broom, Additional 350 gallon water tank and more. #160171

2017 Peterbilt w/ Wittke Starlight



Demo 40 Yard Front loader equipped with 20 sec. complete pack cycle time, 12- 14 sec. complete lift arm cycle time, 8,000 lbs. lift capacity, Plow-shaped packer panel and more. #160201

2017 Freightliner M2 106 w/ New Way Cobra



Demo 20 Yard Rear loader equipped with Cummins ISL 270Hp, Allison 3500RDS-P, Lightweight body, externally mounted cylinders for easy maintenance, Auto-lock tailgate, LED lights, Variety of container handling options and more. #160126

2017 Peterbilt w/ Stellar ECCR



Demo Stellar ECCR equipped with a 8,000 lbs. lifting, dumping and transporting capacity, front and rear load containers, inside and outside controls, extendable and retractable fork body with rotatory and more. #160206

2017 Peterbilt w/ TL-3 Lightning Loader



Demo unit is equipped with Cummins ISB 280HP, Allison 3500 RDS, 12K Front Axle, 21K Rear Axle, Dual manual controls for outriggers and loader on both sides of truck, 20 foot Main boom & tip boom reach, Dump body hoist capacity 24 cubic yards and more. #160208

2016 Freightliner 114SD w/ Vac-Con Combination



Demo Vac-Con Combination truck is equipped with Hydraulically operated front mount hose reel, Operating controls in front, Polyethylene water tanks, High capacity water pump, Debris body dump control on side of truck and more. #160074

2016 Peterbilt w/ New Way Mammoth



Demo 40 Yard Front loader equipped with 16,300 lbs. body weight, 21 sec. complete pack cycle time, 12 sec. complete arm cycle time, Hardox steel in body floor & side, hopper floor & sides and tailgate and more. #160113

2016 Peterbilt 320 w/ Wayne Curbtender G4



Demo 27 Yard Side Loader equipped with Cummins engine, Allison Transmission, Safety Vision camera system, 2,000 lb. lift capacity, spare gripper holder, clean out tools and more. #150010

2016 Mack w/ Labrie Automizer



Demo 31 Yard Side Loader equipped with a Heavy duty arm & grabber for 32 to 95 gallon containers, Clean out tools, LED multi-function strobe lights, Extension for 300 gallon containers, 3rd Eye camera systems and more. #140122

2015 Peterbilt 320 w/ Dadee Scorpion ASL



Demo 27 Yard Side Loader equipped with Cummins ISX12, Allison 4500 RDS-P, 1,600 lb lifting capacity, Arm reach of 8 feet, Eaton electrical components, LED work lights and strobe lights, Tip to dump body and more. #140145

2015 Ford Transit Connect w/ IBAK SI Camera System



Demo is equipped with a IBAK Panoramo SI Manhole Inspection Camera System has everything needed to inspect any type of manhole, around 40 manholes daily and more. #150123

New & Demo Trucks On Order

- 2017 Ford 450 w/ IBAK Camera System - SWS170109
- 2018 Pete 567 w/ AA24-200 Endless Chain Hoist - SWS170078
- 2018 Pete 567 w/ AA24-200 Endless Chain Hoist - SWS170079
- 2018 Pete 567 w/ AA24-200 Endless Chain Hoist - SWS170080
- 2018 Pete 567 w/ AA24-200 Endless Chain Hoist - SWS170081
- 2018 Pete 567 w/ AA24-200 Endless Chain Hoist - SWS170082
- 2018 Pete 567 w/ AA24-200 Endless Chain Hoist - SWS170083
- 2018 Pete 567 w/ AA24-200 Endless Chain Hoist - SWS170108
- 2018 Pete 520 w/ Wittke Starlight 40yd Front loader - SWS170084
- 2018 Pete 520 w/ Wittke Starlight 40yd Front loader - SWS170085
- 2018 Pete 520 w/ New Way Mammoth 40 Yard Front Loader - SWS170086
- 2018 Pete 520 w/ Dadee Scorpion 27 Yard Side Loader - SWS170087



Used Trucks



2013 Freightliner w/ Vac-Con Combination



Used 2012 Vac-Con equipped with Aluminum telescoping boom with pendant control station, hose reel front mounted articulated, water system 80 gpm/2000 psi pump, GIANT Hydrostatic driven blower and more. #160058

2012 Freightliner w/ Vac-Con Combination



Used 2012 Vac-Con equipped with Hydrostatic driven blower, Giant water pump, LED lighting, 12 cubic yard debris tank capacity, 1300 gallon water tank capacity and more. #160057

2012 Freightliner M2-106 w/ New Way Cobra



Used 20 Yard Rear loader has a brand new engine w/ full warranty. Equipped with a Full body weld vs stitched, Reeving winch, Hot shift PTO Pack on the go, Kick bar, Cart dumper and more. #160124

2012 International w/ Heil Rapid Rail



Used 20 Yard Automated Side loader equipped a 7400 SBA engine, 11,076 hour and 120,866 miles and more. #170011

2010 Mack w/ Heil 7000 ASL



Used 33 Yard Automated Side loader equipped with Universal grabbers, Dual steering, Heated/motor mirrors and more. #160050

2010 Peterbilt w/ Labrie Automizer

NO PHOTO AVAILABLE

Used 31 Yard Automated Side loader is equipped with a 4500 RDS transmission, 64,740 GVWR, 6,663 hours and more. #170021

2009 International w/ Loadmaster



Used 16 Yard Rear loader equipped with a Max Force 466 engine, Allison Auto 6 speed transmission, hours 13,348 and more. #170006

2008 Mack LEV w/ Heil



Used 33 Yard Automated Side loader equipped with a Mack MP7L 325HP engine, Universal grabbers, Dual steering, Heated/motor mirrors and more. #150099

2008 Mack w/ Heil 7000 ASL



Used 33 Yard Automated Side loader equipped with a Mack MP7 325HP engine, Universal grabbers, Dual steering, Heated/motor mirrors, and more. #160049

2006 GMC w/ Heil



Used 22 Yard Side loader in good condition. Equipped with a Duramax engine, Allison transmission, 37,600 GVWR and more. #150121

2006 International w/ 25 Yard Rear Loader



Used 25 Yard Rear loader equipped with a Cummins ISB engine, Eaton manual transmission, 52k GVWR, 16k hours and more. #150106

2005 Autocar WX64 w/ Heil 7000 ASL



Used 33 Yard automated Side loader with full eject equipped with a Cummins ISL 330HP engine, Allison transmission, Universal grabbers, Dual steering and more. #150098

2004 Peterbilt w/ 2010 Heil 7000 Durapack



Used 28 Yard automated Side loader with full eject equipped with a CAT C10 engine, Allison transmission, 62,740 GVWR and more. #170034

2004 Sterling w/ Vac-Con Combination



Used 2004 Vac-Con Combination Sewer truck equipped with a CAT C7 275 HP Diesel engine, Allison transmission, 11 cubic yard debris body, Front mount hose reel, Cyclone separator, Lazy susan pipe rack and more. #160003

2004 Pete 320 w/ Heil



Used 28 Yard Side loader equipped with CAT C10 335HP engine, Allison HD4560P transmission, 62,740 GVWR and more. #160098

2004 Peterbilt w/ 2011 Heil 7000 Durapack



Used 28 Yard Side loader equipped with a CAT C10 engine, Allison transmission, 62,740 GVWR, 12,471 hours and more. #170035

2003 Volvo w/ Heil



Used 24 Yard Side loader equipped with a Volvo VED7 engine, 5 speed transmission, 42,020 GVWR and more. #150120

2003 Autocar w/ Heil ASL



Used 28 Yard Side loader equipped with a Cummins ISM 320 HP engine, Allison 6 speed transmission, 18k front axle, 40k rear axle, Python arm and more. #140087

2002 Volvo w/ Heil ASL



Used 28 Yard Automated Side loader equipped with a Cummins ISM engine, Allison 4060 5 speed transmission, 60k GVWR, Rapid Rail arm, 160k miles and more. #140142

2002 Autocar w/ Heil Half-Pack



Used 40 Yard Front loader equipped with a ISM V engine, HD 4560P transmission 66k GVWR, Left-hand drive and more. #170033

Used Trucks

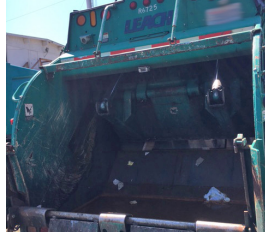


**2002 CCC w/
Leach 2Rll**



Used 25 Yard Rear loader equipped with a CAT engine, Automatic transmission, 65k GVWR, 18k hours and more. #170098

**2002 CCC w/
Leach 2Rll**



Used 25 Yard Rear loader equipped with a a CAT engine, Automatic transmission, 65k GVWR, 19k hours and more. #170099

**2002 CCC w/
Leach 2Rll**



Used 25 Yard Rear loader equipped with a a CAT engine, Automatic transmission, 65k GVWR, 16k hours and more. #170100

**2001 Freightliner w/
McNeilus**



Used 25 Yard Rear loader equipped with a Cummins ISL engine, Automatic transmission, 75,020 GVWR and more. #160065

**2001 Volvo w/
Wayne Curbtender**



Used 20 Yard Side loader equipped with a Allison transmission, 44,740 GVWR, 107k miles, 3k hours and more. #160004

**2000 CCC w/
McNeilus**



Used 25 Yard Rear loader equipped with a a CAT engine, Automatic transmission, 65k GVWR, 21k hours and more. #170097

**1996 CCC w/
2005 Labrie Minimax**



Used 12 Yard Side loader equipped with a 3116 CAT engine, Allison transmission, Dual Perkins car tippers and more. #140066

**1988 Volvo w/
Leach 2Rll**



Used 25 Yard Rear loader equipped with a Detroit engine, Allison transmission, Drum winch, Container dump bar, Full eject and more. #6578

**1988 Peterbilt 320 w/
Heil Formula 7000**



Used 20 Yard Automated Side loader equipped with a Cummins L10 engine, Allison MT654 transmission, 41,200 GVWR and more. #160130

Announcing New Name - SWS Equipment, Inc.

We are excited to announce our name change from Solid Waste Systems, Inc. to **SWS Equipment, Inc.** There has been no change in the structure or ownership of our company and we will still provide the same products and great service we have built our reputation on. We kindly ask you to update your records and to address all future correspondence to our new company name, **SWS Equipment, Inc.** If you have any questions regarding our name change, please feel free to contact us. 1-800-892-7831

Address:

SWS Equipment, Inc.
PO Box 13040
Spokane, WA 99213

New Website:

www.SWSEquipment.com

Company email:

All employees' emails will end with @swsequipment.com and will continue to be first name and last initial.

Thank you for doing business with us.

WWW.SWSEquipment.COM



TOLL FREE 1-800-892-7831

New & Used Equipment



New Balers

Marathon V6030HD w/ Options - 7 Available
Marathon V6030HD - 1 Available

New Compactor

Marathon RJ250 Self-Contained 30 Yard #170103
Marathon RJ250 Self-Contained 30 Yard #170104

Used Compactor - Stationary

Used Cram-A-lot 2 Yard #140054
Used Cram-A-Lot 2 Yard #140067
Used 2 Yard #140073
Used Marathon TC220 #140126
Used Marathon TC225 #150005
Used Galbreath Stationary #150011
Used Marathon TC225 #150048
Used Quality Products #150006
Used Marathon TC2HD #140088
Used Marathon TC2 HD #150155
Used Galbreath PF6055 2.5 Yard #150160
Used Marathon TC-2HD #160020
Used Galbreath PF 6040 Packer Head #160054
Used Marathon TC3HD #150025
Used Marathon VIP6 #150079
Used Marathon VIP6 #150080
Used Marathon VIP6 #150081
Used Marathon VIP3 #160005
Used Marathon RJ1835 #160082
Used Marathon TC3 #160084
Used Marathon VIP6 #160088
Used Marathon TC225 #160119
Used Cramalot Apt Compactor #160127
Used Marathon RJ225 #140129
Used Marathon RJ225HD #160163
Used Global JM160 #160176
Used Marathon TC220HDHF #170013
Used Marathon TC3 HD #170106
Used KP2SH #170031
Used Kilkom 3A #170095
Used Marathon RJ225 #170105
Used Marathon RJ225 2 Yard #170064
Used Marathon TC2HD #170054
Used Marathon TC2HD #170056
Used Marathon TC2HD #170051
Used Global JM40 #170053
Used Marathon TC2HD #170055
Used Marathon TC2HD #170057
Used Marathon TC2HD #170058
Used Marathon TC2HD #170059
Used Marathon TC2 #170075



Used Compactor - Self Contained

Used Global E32 20 Yard HT #140006
Used Marathon RJ88SC 24 Yard #140010
Used Kilkom LP48 HT #140027
Used Summit SC2244 10 Yard #140030
Used Marathon MPT 6 Yard #140139
Used Marathon MPT4 FL #150051
Used Marathon JP-16ROSC #150059
Used Kilkom A2/2008 20 Yard #140106
Used Marathon MPT 4 Yard FL #140128
Used Marathon MPT 4 Yard FL #150117
Used Marathon MPT 4 Yard FL #150130
Used Marathon MPT 4 Yard FL #150138
Used RJ140SC 20 Yard #150168
Used Marathon MPT 5 Yard FL #160018
Used Summit SC4060 25 Yard #160081
Used Marathon MPT 4 Yard #160095
Used Summit25 Yard #160100
Used Marathon RJ250 30 Yard #160114
Used Marathon RJ100SC #160180
Used Kilkom LP60 w/ 2 Yd Dumper #160205
Used WasteQuip WQ265X #170002
Used Kilkom LP60 20 Yard #170003
Used Global E40 10 Yard #170101
Used Global E32HD 20 Yard #170102
Used KPAC KP1HT 25 Yard #170029
Used Marathon RJ250WD 30 Yard #170096

Used Balers

Used Piqua Vertical Baler #140049
Used Piqua Vertical Baler #150053
Used WasteQuip Baler #150068
Used Kilkom 220 48" Baler #6810
Used WasteQuip Baler #150070
Used GPI M42BC Baler #150074
Used Marathon SE Baler #160021
Used Excel Below Ground Conveyor #140060
Used EX62 Horizontal Baler #140111
Used Marathon V4830 Vertical Baler #160093
Used GPI Harmony Baler #160137
Used Cramalot 72-DH-LU Baler #160174
Used Global 160HD Baler #160191
Used Kilkom K1-5 Baler #170077
Used Kilkom K1-5 Baler #170048
Used Marathon V6030 Baler #170113

New & Used Equipment



Used Containers

Used 30 Yard Octagonal Container #140011
Used 30 Yard Octagonal Container #140012
Used 25 Yard Octagonal Container #140053
Used 30 Yard Octagonal Container #140110
Used 30 Yard Octagonal Container #150019
Used Marathon 30 Yard Octagonal Container #160026
Used 30 Yard Octagonal Container #160030
Used 40 Yard Octagonal Container #160040
Used Galbreath 33 Octagonal Container #160055
Used 30 Yard Octagonal Container #160067
Used 2 Yard Capital MiniMac Container #160083
Used 2 Yard Tow Carts #160132
Used REM 40 Yard Container #160145
Used 30 Yard Octagonal Container #160164
Used 40 Yard Octagonal Container #170014
Used 40 Yard Octagonal Container #170107
Used 5 Yard Compaction Container #170091
Used 30 Yard Container #170032
Used 30 Yard Container #170065
Used Marathon 40 Yard Octagonal Container #170037
Used Marathon 40 Yard Octagonal Container #170038
Used Marathon 40 Yard Octagonal Container #170039
Used Marathon 40 Yard Octagonal Container #170040
Used Marathon 40 Yard Octagonal Container #170042
Used Marathon 40 Yard Octagonal Container #170043
Used Marathon 40 Yard Octagonal Container #170044
Used 40 Yard Octagonal Container #170045
Used 40 Yard Octagonal Container #170046
Used 40 Yard Octagonal Container #170047
Used Marathon 40 Yard Octagonal Container #170076
Used Marathon 40 Yard Octagonal Container #170110



Miscellaneous Used

Used Bale Cart for stockroom baler #MBVCART
Used Sonozaire 115A #5657
Used Marathon Ground-level Cart Dumper #6502
Used Marathon Integral Cart Dumper #6652
Used Complete Cascon Hoist (Hoist Only) #6748
Used Marathon Power Unit 3 Phase, 3 HP, 208 VAC #6751
Used 2 Yard Stationary Ground Mount Cart Tipper #140040
Used 2 Yard Stationary Ground Mount Cart Tipper #140039
Used Capital Tow Carts (Qty 13) #140137
Used Perkins Universal Tap in Kit #150045
Used Galbreath Dumper #140091
Used Cart Dumper (Custom Fabrication) #150063
Used REM TRC 18 48" Wide Above Ground Conveyor #150061
Used Mega Special Cart Dumper 68/95 Gallon #150109
Used Perkins Universal Tap in Kit #140117
Used Power Unit (Off Marathon RJ250SC) #160041
Used 2 Yard Packer Head #160039
Used Marathon Tipper #160056
Used Bridgestone 11R-22.5 RETREAD Tires (Qty 7) #160059
Used Galbreath 10HP Power Unit #160017
Used Marathon Power Unit #160076
Used Marathon Power Unit #160085
Used Galbreath Power Unit #160152
Used Marathon Power Unit w/ Dumper Controls #160153
Used Marathon Power Unit #160154
Used Marathon Power Unit w/ Dumper #160155
Used Nedland Power Unit #160156
Used Galbreath Power Unit #160157
Used Marathon 10 HP Power Unit #160099
Used Marathon RJ88 Power Unit #160162
Used Marathon 10 HP Power Unit #160168
Used Marathon 5HP Power Unit #160170
Used Marathon 5HP Power Unit #160173
Used 5HP Power Unit #170018
Used 5HP Power Unit #170027
Used Marathon Power Unit from RJ88 #150058
Used Galbreath Power Unit #150115
Used Galbreath Power Unit #150116
Used Marathon Power Unit from MPT4 #160006
Used Marathon Power Unit from RJ250 #160046
Used Galbreath 10HP Power Unit #160096
Used Cramalot Power Unit #160102
Used Marathon 10HP Power Unit #160109
Used Galbreath Power Unit #160140
Used Galbreath Power Unit #160141
Used Power Unit #160177
Used Power Unit #170026





Upcoming Tradeshows

- APWA WA Fall Conference - Kennewick, WA - Oct 3 to 6, 2017
- WAMOA 2017 Fall Conference - Yakima, WA - Oct 5, 2017
- Road and Street Maintenance WSU - Yakima, WA - Oct 9 & 10, 2017
- APWA Oregon Fall Conference - Pendleton, OR - Oct 17 to 20, 2017
- Pacific Northwest Clean Water Association, Vancouver, WA - Oct 23 to 24, 2017
- APWA Oregon Street Maintenance & Collection - Newport, WA - Oct 25, 2017



What's Happening at SWS?





PO Box 13040
Spokane, WA 99213-3040

Standard
U.S. Postage
PAID
Spokane, WA
Permit #4

Spokane: 1-509-533-9000
Tacoma: 1-206-282-2100
Toll Free: 1-800-892-7831
www.SWSEquipment.com

Summer 2017

Take a look at our newly designed website:
www.SWSEquipment.com

Looking for a Used Refuse Truck?

Tips for Success

It's hard to believe that Seventy-five percent of a ten million dollar refuse truck inventory are used refuse trucks. In the past few years the market for reconditioned refuse trucks has been steadily increasing. People are looking mainly at two factors for purchasing a used truck instead of new. One factor is the total cost of ownership. The second factor, and in many cases the most alluring, is the immediate availability. Buying a new truck requires a lead-time of three to six months.

Buying a reconditioned refuse truck, though, can be challenging. Everyone has the question, "what do I need to look for when choosing the right used refuse truck?"

Dealer research is important. Buyers want to make sure they are buying from a reputable company that has the experience and knowledge in the refuse truck industry. Documentation on the truck is also important. Buyers will want to know everything about the truck. Repair history is important as well as obtaining a thorough dealer inspection from the cosmetics to the mechanical functionality. Knowing how to operate the truck is just as important and reputable dealers will include training with the purchase of the truck. Find out the history of the truck, where it was operated and the collection route. Beware that the truck's body or engine could have been swapped out. This would cause the body to have more miles than the engine or vice versa and means the odometer reading does not reflect what the actual mileage is on the engine. The dealer will be able to plug into the trucks computer system for an accurate reading of miles, horsepower and hours to ensure the engine meets performance standards. Also ask about whether the truck is DOT compliant. The dealer should have a DOT inspection performed on the truck and will be able to provide the inspection documentation.

A reconditioned refuse truck can be a great option. Follow these tips and you are ahead of the game when it comes to purchasing a reliable used refuse truck.

