



ACCESSORIES | **Perkins** | AUTOMATED SYSTEMS | **HYDRAULIC LIFTERS** | INDUSTRIAL LIFTERS | ACCESSORIES

## MODEL D6400/05: ECONOMY TIPPER-BAR TUCKAWAY<sup>®</sup> LIFTER

Perkins proves that making an inexpensive rotary cart lifter doesn't mean compromising on quality with these Economy Tipper-Bar Tuckaway<sup>®</sup> models, featuring arc of motion cart grabbing action and the same high performance actuator that graces our other models. Now with a more powerful 27k helical rotary actuator!





## Features and Benefits

The performance you demand requires a serious machine with all the refinements that you've come to expect from the leader in the waste handling industry.

- ◆ All new, powerful 27k Helical Actuator
- ◆ Featuring TuckAway® Lifter Performance with BreakAway Action
- ◆ Unique "Back-Saving" action grabs carts on various terrains and heights
- ◆ Stores under the hopper when not in use
- ◆ Minimal greasing for less maintenance
- ◆ Spring loaded lower latch is easy on cart surfaces
- ◆ UHMW upper saddle prevents scratches on carts
- ◆ ISO 9001 manufacturer
- ◆ National Service technicians for product support
- ◆ Fully staffed engineering department for custom applications



## Specifications

- Fully compatible to ANSI Type B carts
- Mounting height to top of plate:  
Low as 38 1/2", up to 41"
- 1,550 PSI required for 400lb load
- 6-8 second cycle time @ 3 GPM
- 45 degree dump angle
- BreakAway feature reduces collision damage, protecting the actuator
- Safety Yellow powder-coated finish
- Self-lubricated bearings at pivot points
- Easy bolt-on/off mounting plate included
- Adjustable flow control valve
- 2 year limited warranty

### Perkins Manufacturing Company

737 Oakridge Drive Romeoville, IL 60446

(708) 482-9500 Fax: (708) 354-5878

Email: tuckaway@perkinsmfg.com

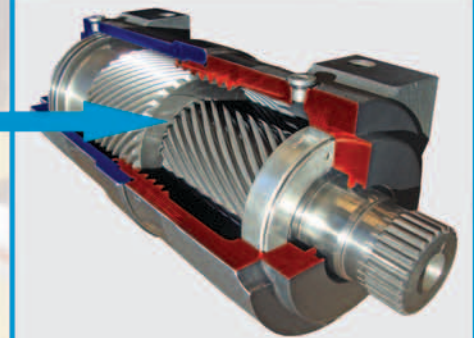
www.Perkinsmfg.com TOLL FREE 800-882-5292



Inside a Perkins actuator, the loads are carried by all the teeth, all the time



Inside rack & pinion systems, the loads are concentrated on only one tooth



## NEW ADVANCED 27K ACTUATOR

- ◆ Higher torque & lower weight
- ◆ Two-part casted body is easier to open and service
- ◆ Fewer parts & fewer points that need sealing
- ◆ New grease points positioned to help flush away contaminants



**Perkins. Route tested. Driver approved.**

Model D6400 & D6405 Cart Lifter, Patent 6,921,239. An ISO 9001:2000 Company